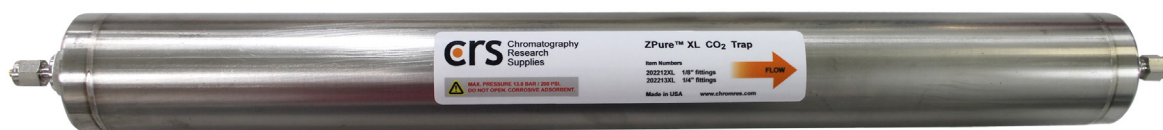


ZPure™ CO₂ Traps

The CRS CO₂ Traps remove carbon dioxide from the gas stream. Trace levels of CO₂ (50 ppm or less) are removed from the gas stream in a reaction with highly dispersed NaOH on silicate support. The reaction product is water, which remains adsorbed in the purifier. However, when downstream water is of very high concern, it is recommended to use a second purifier in line as a safety measure.

	ZPure XL CO ₂ Trap	CO ₂ Purifier	ZPure CO ₂ Trap
Volume of Adsorbent:	750 cc	500 cc	130 cc
Capacity:	150 g of CO ₂	100 g of CO ₂	26 g of CO ₂
Dimensions:	5 cm diameter x 50 cm length	5 cm diameter x 37 cm length	2.5 cm diameter x 28 cm length
Fittings:	Brass or Stainless Steel in 1/4" or 1/8"	Nickel Plated Brass in 1/4" or 1/8"	Brass or Stainless Steel in 1/4" or 1/8"

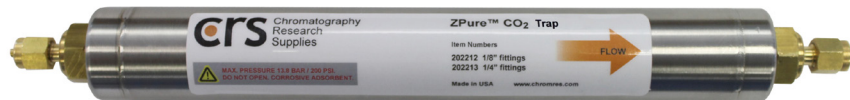
ZPure™ XL CO₂ Trap



CO₂ Purifier



ZPure™ CO₂ Trap



Description	Item No.	Description	Item No.
ZPure XL CO ₂ Trap, 1/8" Brass Fittings	202212XL-B	CO ₂ Purifier, 1/8" Fittings	202350
ZPure XL CO ₂ Trap, 1/8" SS Fittings	202212XL-SS	CO ₂ Purifier, 1/4" Fittings	202352
ZPure XL CO ₂ Trap, 1/4" Brass Fittings	202213XL-B	ZPure CO ₂ Trap, 1/8" Brass Fittings	202212-B
ZPure XL CO ₂ Trap, 1/4" SS Fittings	202213XL-SS	ZPure CO ₂ Trap, 1/8" SS Fittings	202212-SS
		ZPure CO ₂ Trap, 1/4" Brass Fittings	202213-B
		ZPure CO ₂ Trap, 1/4" SS Fittings	202213-SS

